

## **Knit a Shetland hat for whaaps (curlews)**

***Designed by Linda Shearer from the Shetland Guild of Spinners, Knitters, Weavers & Dyers to support the RSPB's Curlew Crisis Month.***

The Guild was set up in Shetland in the 1980s. The main objectives are to develop an interest in traditional crafts like spinning, knitting, weaving and dyeing. We also bring knowledge of these crafts to the public through tuition, exhibitions and workshops. Membership of the Guild is open to all.



This is a generously sized hat knitted in Shetland wool. You will need 50g of the main colour and 25g of contrasting colour(s). Any similar yarn (4ply) can be used, just remember to check tension. Pom-pom is optional.

**Needles:** a set of two or three 2.75mm needles or a circular needle  
a set of three 3.5mm needles or a circular needle  
or preferred needles for knitting a small item in the round

**Yarn:** The photographed hat is knitted in Jamiesons of Shetland's Spindrift two ply jumper weight yarn  
[jamiesonsofshetland.co.uk](http://jamiesonsofshetland.co.uk)

Main colour (MC) – Eesit 105 – 2 x 25g balls  
Shaela 102 – 1x 25g ball  
Moorit 108 – 1x 25g ball  
Granite 122 – 1x 25g ball  
Shetland Black 101 – 1x 25g ball

**Size:** 53.5cm/21 inches circumference  
20cm/8 inches deep with brim turned up

**Tension:** 32 stitches and 32 rounds over 10cm of patterned area, after blocking

**Abbreviations:** inc: increase  
k: knit  
k2tog: knit two together  
kfb: knit into the front then the back of the st to inc one st  
MC: main colour  
p: purl  
rep: repeat  
st (sts): stitches

**Notes:** When working a large section of colour, the floats (the yarn carried across the back) become too long to easily keep tension. The yarn can be caught up at the back. Catch the yarn float every four or five stitches.

- Insert right-hand needle into stitch as if to knit.
- Lift left-hand yarn (contrast foreground colour) over needle.
- Wrap right-hand yarn (main background colour) to knit. Pull through, leaving left-hand yarn. Slide original stitch off needle. You should see at the back that your contrast colour has been caught.

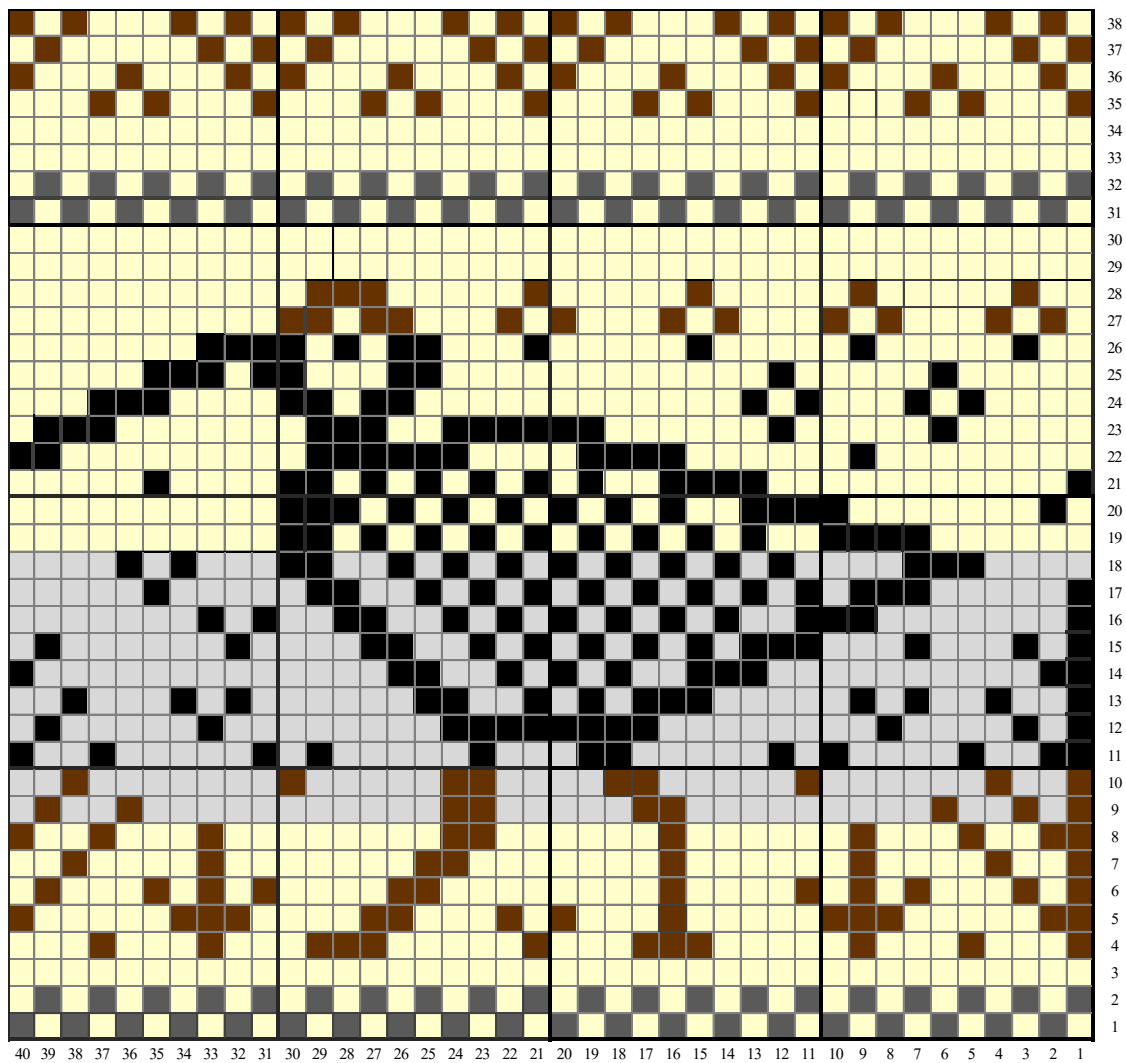
**Instructions:**

***For turn up rib, you can either knit it flat or in the round.***

- Using MC and smaller needles, cast on 120 stitches.
- Row/round 1,\* k1, p1; rep from \* to end of row/round
- Repeat this row/round another 39 times (40 rows/rounds altogether)
- If rib has been knitted flat, now join for knitting in the round
- Next round, k
- Increase round – \*k2, kfb; rep from \* to end of round (160sts)
- Change to bigger needles and knit one round
- Join on chosen contrasting colour(s) and follow chart, reading from right to left

**KEY**

	Eesit
	Shaela
	Moorit
	Granite
	Shetland Black



After chart has been completed, knit two rounds in MC.

### **Crown shaping:**

- First round – \*k6, k2tog; rep from \* to end of round (140sts)
- Second round, k
- Third round \*k5, k2tog; rep from \* to end of round (130 sts)
- Fourth round, k
- Fifth round \*k4, k2tog; rep from \* to end of round (120 sts)
- Sixth round, k
- Continue in this way until you have 20 stitches left
- K2tog to end of round (10 sts)
- Break yarn and thread through remaining stitches

### **Finishing:**

- Tighten ends and weave in. Sew up rib/brim if knitted flat
- Give hat a quick wash in warm soapy water
- Rinse in warm water, roll in a clean towel to take out some of the water
- Place hat over a bowl, balloon or suitable object to block
- After blocking, dampen the rib/brim and pull to the length – let it dry
- Make pom-pom and attach